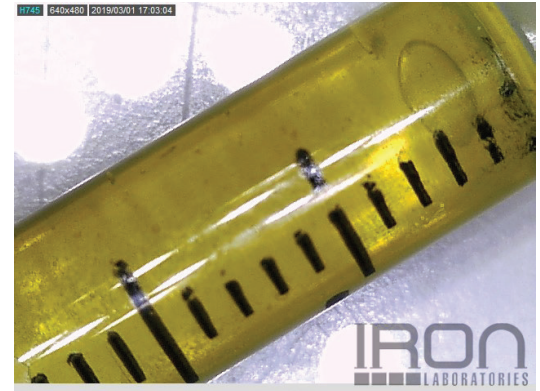


Test Accreditation #: 77802

Sample ID #: 115398

<p>Sample Details</p> <p>Product: Pure Holistic 1oz 1000mg Mint</p> <p>Sample: 022719C LOT: FG002432 Sampled Product: Infused Product Method: FE04U HPLC1100-1 Molds/Pests: N/A</p>	<p>Test Conditions</p> <p>Scale: XS205-MI2 Temp.: 22.0 °C Baro Pressure: 979.4 hPa</p>
--	---

Test Date: 03/04/2019



<p>Simple Cannabinoid Profile Overview</p> <p>Total Product Size: 28g **Total Cannabinoids: 1,041.6mg</p>
--

Test Compounds	THC	THCA	CBD	CBDA	CBN	CBG*	CBC*	THCV*	CBDV*	Total Cannabinoids	Total THC	Total CBD	Calc Max Total Cannabinoids*
Amount (%)	0.1†	0.1	1.0	2.9	N/D	N/D	0.1	N/D	N/D	4.1%	0.1%†	3.5%	3.7%
Amount (mg/g)	0.9 †	0.5	10.2	28.5	N/D	N/D	0.6	N/D	N/D	40.7mg/g	1.4mg/g†	35.2mg/g	37.2mg/g
Amount/Serving (mg)	0.9 †	0.5	10.2	28.5	N/D	N/D	0.6	N/D	N/D	40.7mg/g	Serving Size~ (g):		1.0
LOQ (mg/g)	0.19	0.19	0.19	0.19	0.19	0.19	0.19	0.19	0.19		%Decarb.	THC	CBD
±% RPD	1.3	1.4	2.4	1.1	0.6	2.4	4.5	1.2	4.7			64	26

† This passes our quality control guidelines for non-psychoactive industrial hemp oil. See next page for more details.

LOQ = Limit of Quantitation; %RPD = Relative Percent Deviation; N/D = Not Detected

‡ Uncertainty measurement is for the test procedure and the instrument used; and is calculated in accordance with the ISO "Guide of Uncertainty in Measurement" (GUM) Test Results and uncertainty are only representative of the sample submit to Iron Laboratories. Uncertainty does not account for any uncertainty in the sampling. The measurement of uncertainty is the expanded uncertainty and is an estimate of uncertainty calculated with normal distribution and a coverage factor of 2 (K=2) to approximate a 95% confidence level.

* Designates compounds that are not currently included in Iron Laboratories' accredited scope.

Total THC and CBD is the calculated sum of THC or CBD and the amount of THC or CBD derived from THCA or CBDA, respectively. These values are calculated by applying a molar correction factor of 0.877 to the THCA or the CBDA value. Calc Max Total Cannabinoids is the sum of Total THC, Total CBD, CBN, CBG, CBC, THCV, and CBDV.

CBD Decarb. % refers to the percentage of CBD relative to CBDA.

All lab testing is performed by a third party facility at one of the labs listed below. The results are taken from a sample of this product. This Certificate of Analysis (COA) is for internal use only and shall not be replicated or shared without written approval from CBD Guru.

** Total Cannabinoids in the simple cannabinoid profile overview is the calculated total amount of cannabinoids in the finished product. This value is found by multiplying the Total Cannabinoids (milligram per gram) in this test result by the total weight (grams) of the product.



ISO/IEC 17025:2005 Accredited




Management Signature